

# Model EDCIII

Weighted Lever Detector Check Valves  
Sizes 4", 6", 8" and 10"

**Mueller** SYSTEMS

## **NOTICE OF DISCONTINUATION, Effective October 2011**

Mueller Systems has discontinued new sales of our EDCIII detector check line in an effort to introduce more cost effective and versatile check valves.

If you need an alternative detector check to our EDCIII product line, please take a look at the Hersey EDCIV detector check line.

**Replacement component parts for the EDCIII line will continue to be available for the foreseeable future. As we deplete our existing stock of components, we will no longer offer these options for sale. Check the exploded diagram and table in this data sheet for highlighted replacement components to keep your EDCIII performing to new detector check standards.**

Thank you for using Hersey products. We appreciate your continued business.

# Model EDC III

Mueller SYSTEMS

## Weighted Lever Detector Check Valves Sizes 4", 6", 8" and 10"

### Features

**APPLICATIONS:** For installation in commercial fire lines, or any water supply system to detect leakage or unauthorized use. Designed for horizontal installation.

**CONFORMANCE TO STANDARDS:** UL Listed; FM Approved.

**DESCRIPTION:** HERSEY Model EDC III Detector Check Valves consist of a main check valve with a rubber seal, operated by a weighted lever (available with optional trim kit and bypass meter). The Model EDC III prevents water from re-entering the potable water system, while detecting leaks in the fire sprinkler system or unauthorized use of sprinkler system water.

The optional bypass is comprised of a shutoff valve, swing check, and a Hersey Model MVR magnetic turbine meter, or a Hersey Model 400/500 IIS positive displacement meter.

Solid state remote reading systems are available for all meters offered with the Model EDC III (See Reading Systems Section).

**OPERATION:** With the mainline valve held closed by the weighted lever, any low flow will be directed through the bypass and measured by the bypass meter. When the pressure loss through the bypass is approximately 1.5 PSI, the mainline valve opens automatically, allowing unrestricted flow. The mainline valve and check on the bypass prevent loss of water from the system. Closing the inlet shutoff valve permits in-line servicing of the bypass meter while the mainline remains in service.

**CONNECTIONS:** Flange x Flange.



Shown with Optional Trim Kit and Bypass Meter

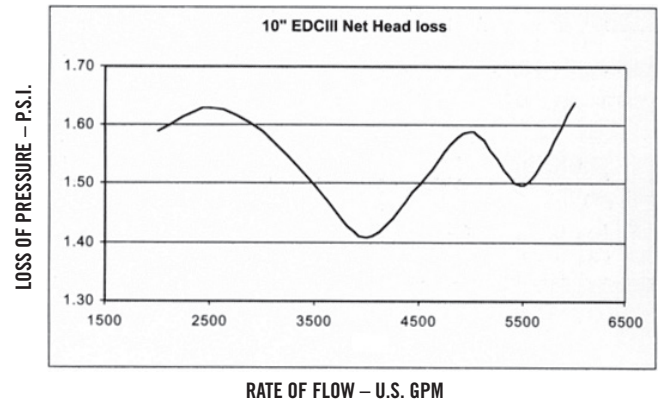
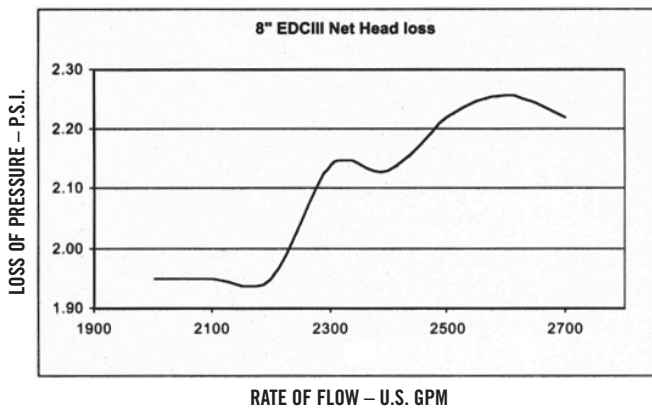
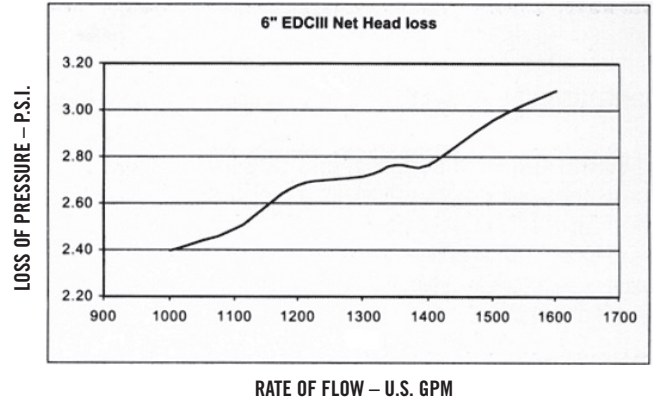
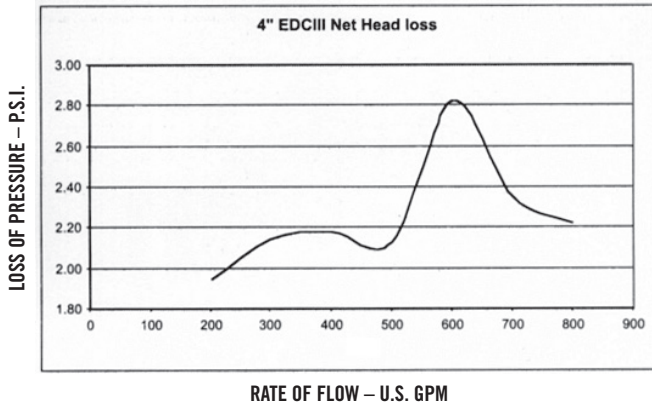
### Materials and Specifications

MODEL DESIGNATION	EDC III
SIZES	4", 6", 8", 10"
MAXIMUM WORKING PRESSURE	175 PSI
HYDROSTATIC TEST PRESSURE	350 PSI
TEMPERATURE RANGE	33°F to 100°F
STANDARDS	Underwriters Laboratories (UL) Listed; Factory Mutual (FM) approved
VALVE BODY	Standard - Fusion bonded epoxy on cast iron
CLAPPER SEAT	Rubber to Bronze
OPTIONAL BYPASS METER CASE	Bronze
OPTIONAL BYPASS REGISTER	Sealed plastic
OPTIONAL BYPASS INTERIOR	Plastic

Model EDC III

### Performance

Head Loss – 4"



# Model EDC III



Weighted Lever Detector Check Valves  
 Sizes 4", 6", 8" and 10"

## Dimensions and Weights

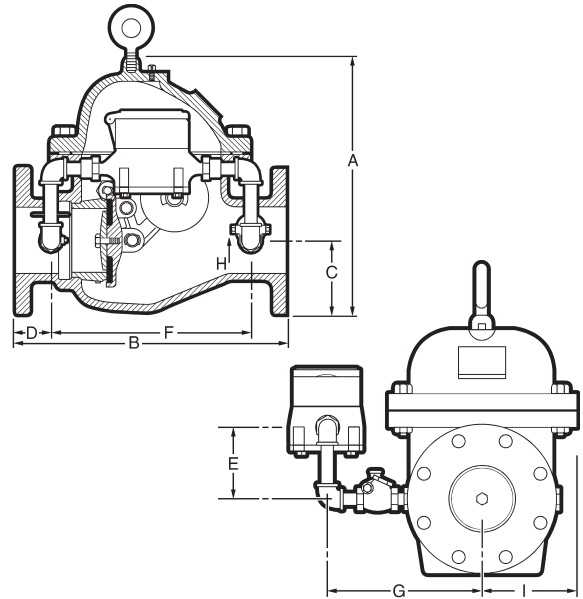
Size	4"	6"	8"	10"
A	16"	20-1/4"	24"	27-1/4"
B	16-1/2"	22-1/2"	25"	28"
C	4-1/2"	5-1/2"	6-3/4"	8"
D	2-3/8"	3"	3-5/16"	4-3/4"
F	11-3/32"	16-1/2"	18"	18-1/2"
G	1	1-1/2"	2"	2"

Model EDC III

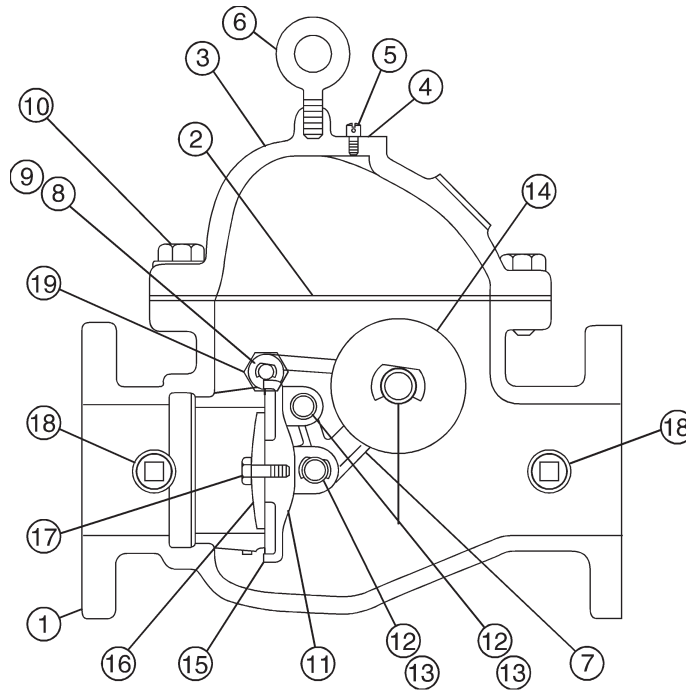
Meter Size	E* All Valves	G*			
		4"	6"	8"	10"
5/8"	7"	8-5/8"	9-5/8"	9-5/8"	—
5/8"x3/4"	7"	8-5/8"	9-5/8"	10-7/8"	10-7/8"
3/4"	7"	—	9-5/8"	10-7/8"	—
1"	8"	—	12-7/8"	14-1/8"	15-1/4"

\*Nominal

Size	4"	6"	8"	10"
Net Wt.	165	315	427	565
No Bypass				
Lbs.				



#### Parts Less Bypass Meter



Ref No.	Description	4" Model	6" Model	8" Model	10" Model
1	Body with Brass Seat Ring	N/A	N/A	N/A	N/A
2	Cover Gasket	196326	196327	196328	196329
3	Cover	55644	56444	57447	58414
4	Vent Screw Washer	59073	59073	59073	59073
5	Vent Screw	59003	59003	59003	59003
6	Eye Bolt	AS7731	AS7732	AS7732	AS7732
7	Clapper Arm	144123	144130	144145	144161
8	Hinge Pin Clip	196310 (2)	196310 (2)	196311 (2)	196311 (2)
9	Hinge Pin Washer	196312 (2)	196312 (2)	196313 (2)	196313 (2)
10	Cap Screw	90243 (8)	196000 (10)	90338 (12)	90338 (12)
11	Clapper	144119	144132	144147	144163
12	Clapper Pin	55643 (3)	56443 (3)	57446 (2) 57443 (1)	58415 (3)
13	Pin Clip	57498 (6)	57498 (6)	56383 (4) 57498 (2)	56383 (6)
14	Weight	159672	159673	283304	159675
15	Clapper Seat	196124H	196149H	196142H	196409H
16	Clapper Plate	144120	144133	144148	144164
17	Clapper Bolt	196323	196323	196324	196325
18	Pipe Plug	59008 (4)	59009 (4)	59010 (4)	59010 (4)
19	Pivot Shaft	144116 (2)	144131 (2)	144146 (2)	144162 (2)

NOTE: If more than one part is required per assembly, quantity is noted after part number (in parenthesis).