



Street Machine 2 Installation Guide

Document Rev: 1.1

Date: 7/23/2015

Author: D Casper

This Mueller Systems, LLC proprietary and confidential document shall not be reproduced or retransmitted in any way without expressed written consent from Mueller Systems

1. Introduction

The Street Machine Quick Installation Guide is a document to instruct customers in how to set up and connect the Street Machine 2 system in a vehicle.

The Street Machine 2 System components are not interchangeable with Street Machine 1 components. A complete system upgrade is required to obtain the benefits of the Street Machine 2 System which include a smaller and more sensitive receiver, dual antenna array for better reception and sensitivity, and a single power/communications cable to minimize the number of required connections.

2. Components

The Street Machine 2 Kit consists of the following components as shown in Figure 1 below:

1. Street Machine 2 Receiver
2. Two Antenna Whips
3. Antenna Base with Antenna Cable
4. USB Power/Communication Cable

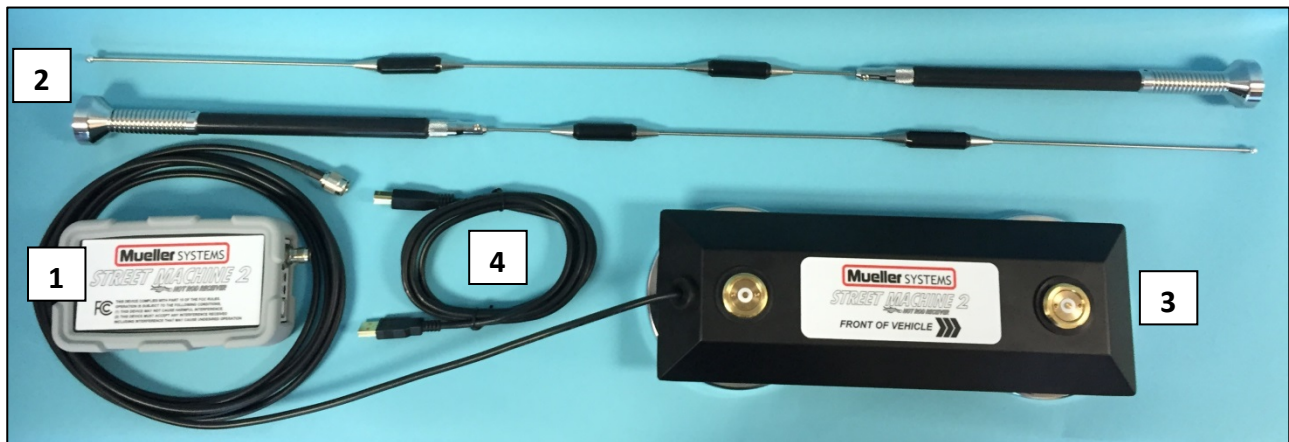


Figure 1 Street Machine 2 Components

3. Dual Assembly

Install the two antenna whips (2) onto the Antenna Housing (3). Carefully thread the antennas onto the connectors making sure that the antennas seat properly and are flush to the body of the housing and rubber washer provided as shown in Figure 2.



Antenna Base, Gaskets and Allen Wrenches



Properly seated gasket on base

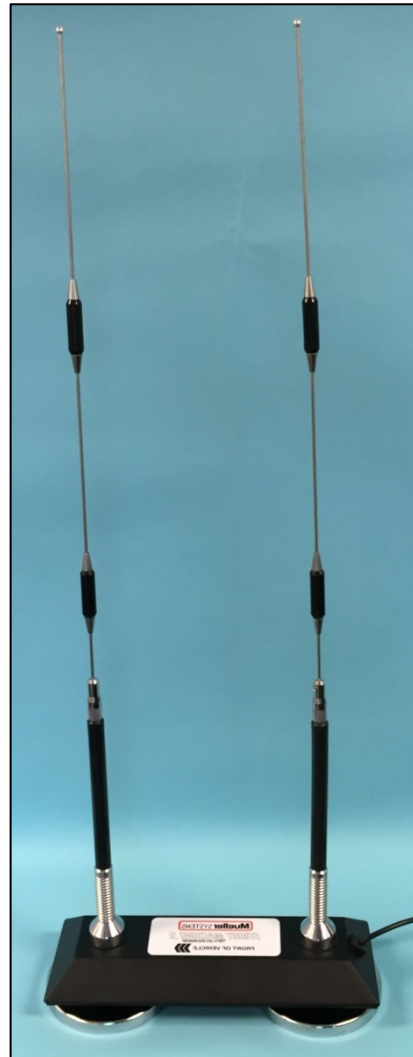


Figure 2 D u a l Antenna 2 Assembly

Next, connect the antenna cable that originates at the antenna base to the Street Machine 2 receiver at the connection labeled ANT as shown in Figure 3. The Street Machine 2 is compatible with the Dual Antenna 2 provided only. Do not use the Street Machine 2 with the single antenna previously utilized with the Street Machine.

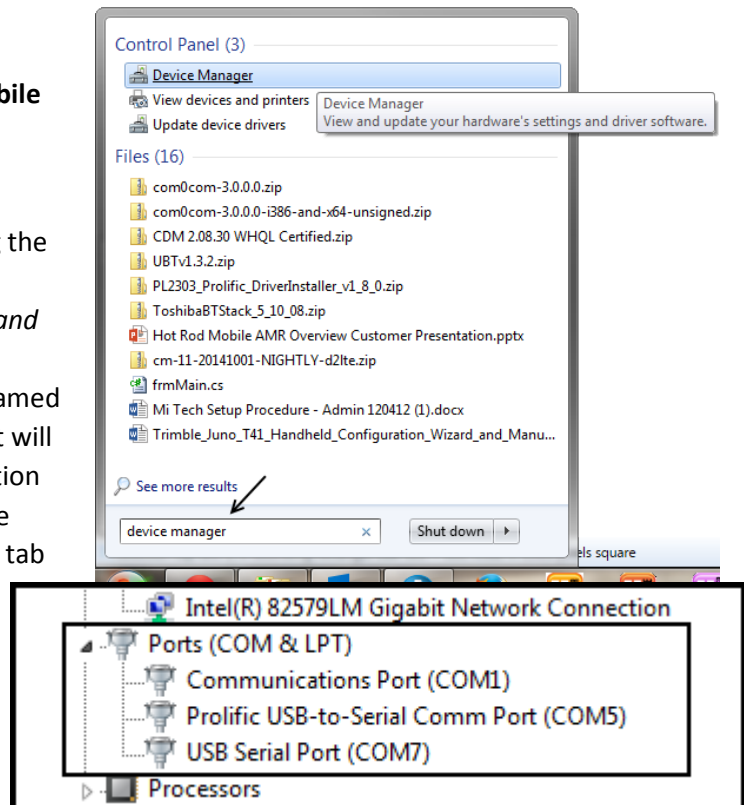


Figure 3 System Connections

The Power/Communication Cable (small USB plug) is plugged into the Power/USB connection of the Street Machine 2 Receiver and an available USB connection (full size plug) on the laptop being utilized to read meters. The proper Comms Port must be selected after the drivers are located on the laptop for the Street Machine 2.

Street Machine Com Port Selection in EZMobile

- Plug the Street Machine 2 into the computer
- Open the Device Manager by clicking the Start button and typing in “device manager” into the *Search Programs and Files* input box
- After the drivers install, the device named “USB Serial Device (COMx)” com port will appear in the Ports (COM & LPT) section
- In the EZMobile software, click on the Street Machine button in the System tab and specify the correct COM Port (the other settings are defaulted to the correct settings)
- Click the Save button to save the settings



4. Vehicle Installation

Place the entire antenna assembly on the roof of the vehicle. Make sure that the dual antenna base 2 is installed so that two antenna whips are aligned with the direction of travel as shown in Figure 4 and Figure 5. Route the cable through a door or window. Make sure that there is enough slack in the cable so that opening or closing the door does not pull on either end of the cable.

Do not place the antenna assembly within 12" of any other antennas on the vehicle. If there are other antennas on the vehicle, orient the antenna assembly (if possible) such that all the antennas are in a straight line along the direction of travel.



Figure 4 D u a l Antenna 2 on Vehicle



Figure 5 D u a l Antenna 2 Label