

# Model EDCIV

**Mueller** SYSTEMS

## Spring Loaded Detector Check Valves Sizes 3", 4", 6", 8" and 10"

### Features

**APPLICATIONS:** For installation in commercial fire lines, or any water supply system to detect leakage or unauthorized use. Designed for horizontal or vertical installation.

**CONFORMANCE TO STANDARDS:** UL, ULC listed; FM approved; NSF-61 Compliant.

**DESCRIPTION:** HERSEY Model EDC IV Check Valves consist of a spring loaded main check valve (available with optional trim kit and bypass meter). The Model EDC IV prevents water from re-entering the potable water system, while detecting leaks in the fire sprinkler system or unauthorized use of sprinkler system water when the optional separate EDC4 bypass is installed. All operating parts of the spring and clapper mechanism are attached to the cover for easy removal and maintenance. For safety, full spring tension is not achieved until the cover is bolted to the body. Spring mechanism provides for low headloss during fire conditions.

The separate standardized bypass is comprised of a shut off valve and swing check with the appropriate 5/8" X 3/4" bypass meter meter ordered as separate line items. Call Mueller Systems customer service for additional information related to bypasses and meter choices. The mainline valve and check on the bypass prevent loss of water from the system. Closing the inlet shutoff valve permits in-line servicing of the bypass meter while the mainline remains in service.

Solid state remote reading systems are available for all meters offered with the Model EDC IV (See Reading Systems Section).

**OPERATION:** With the mainline valve held closed by the spring, any low flow will be directed through the bypass and measured by the bypass meter. When the pressure loss through the bypass is approximately 2.0 PSI, the mainline valve opens automatically, allowing unrestricted flow.

**END CONNECTIONS:** Flange x Flange in all sizes.



Model EDC IV

Spring Loaded Detector Check Valves

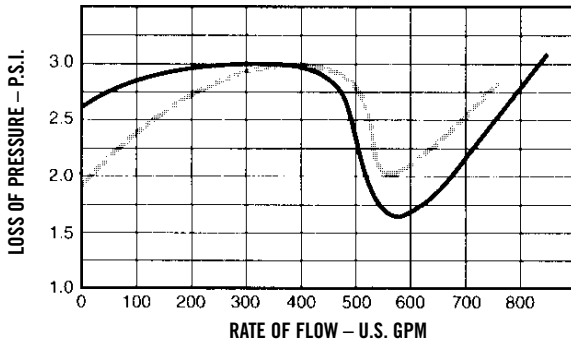
### Materials and Specifications

MODEL DESIGNATION	EDC IV	
SIZES	3", 4", 6", 8", 10"	
MAXIMUM WORKING PRESSURE	175 PSI	
HYDROSTATIC TEST PRESSURE	350 PSI	
TEMPERATURE RANGE	33°F to 110°F	
STANDARDS	Underwriters Laboratories (UL) Listed; Underwriters Laboratories of Canada (ULC) Listed; Factory Mutual (FM) approved; NSF-61 Compliant	
VALVE BODY	Red enamel on cast iron or optional fusion bonded epoxy coating on cast iron.	
CLAPPER SEAT	Rubber clapper on a bronze seat	
BYPASS TAPPING:	3" - 4" 6" - 10"	1" Tap with 3/4" SST Reducing Bushing 2" Tap with 3/4" SST Reducing Bushing

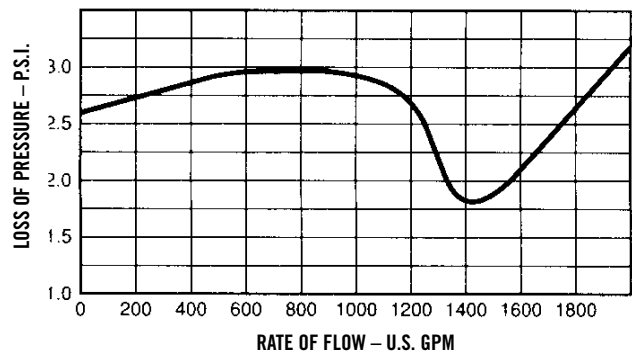
### Spring Loaded Detector Check Valves Sizes 3", 4", 6", 8" and 10"

#### Performance

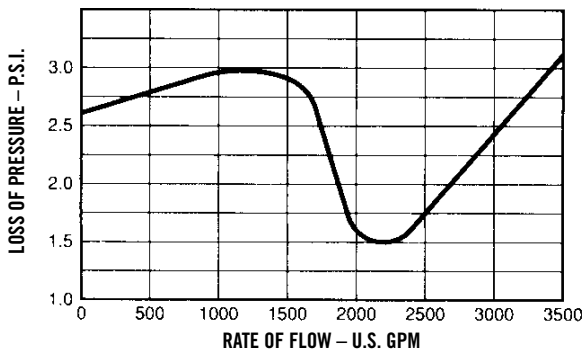
Head Loss – 3" & 4"



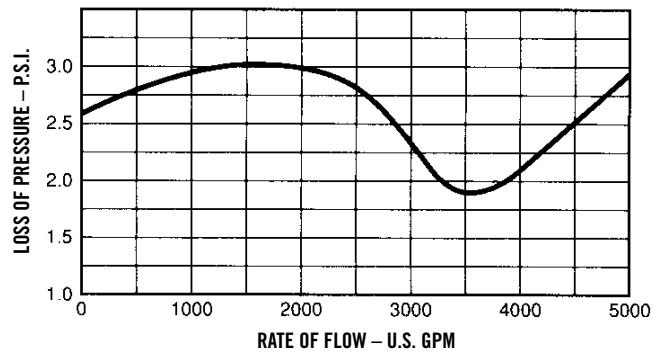
Head Loss – 6"



Head Loss – 8"



Head Loss – 10"

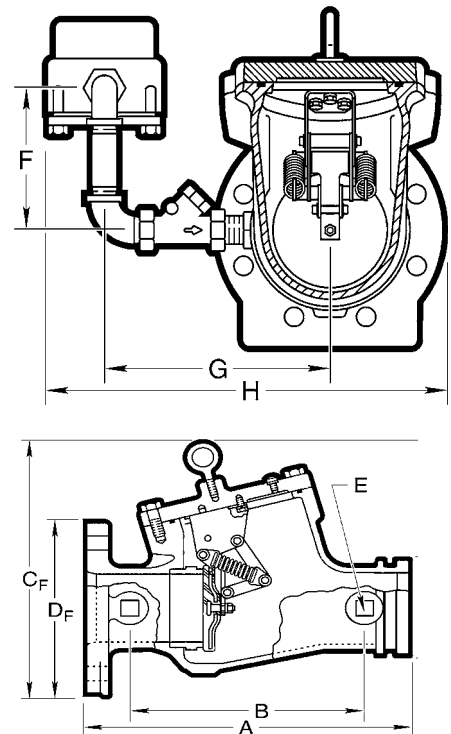


NOTE: Performance curves are typical only and NOT a guarantee of performance.

#### Dimensions

CF and DF refer to Flanged; CG and DG refer to Grooved)

Valve Size	3"	4"	6"	8"	10"
<b>Flanged Ends</b>					
<b>Dimensions</b>					
A	15.00	15.00	21.00	25.00	28.75
B	11.00	11.00	16.00	19.62	22.69
C <sub>F</sub>	12.94	13.31	17.25	21.00	25.62
D <sub>F</sub>	7.50	9.00	11.00	13.50	16.00
E	.75 NPT	.75 NPT	.75NPT	.75NPT	1.5NPT
F	5.25	5.25	8.00	11.50	18.00
G	8.56	8.56	9.69	11.00	16.50
H	14.90	15.12	17.25	20.31	30.25
Weight	70.00	79.25	166.50	318.00	501.00



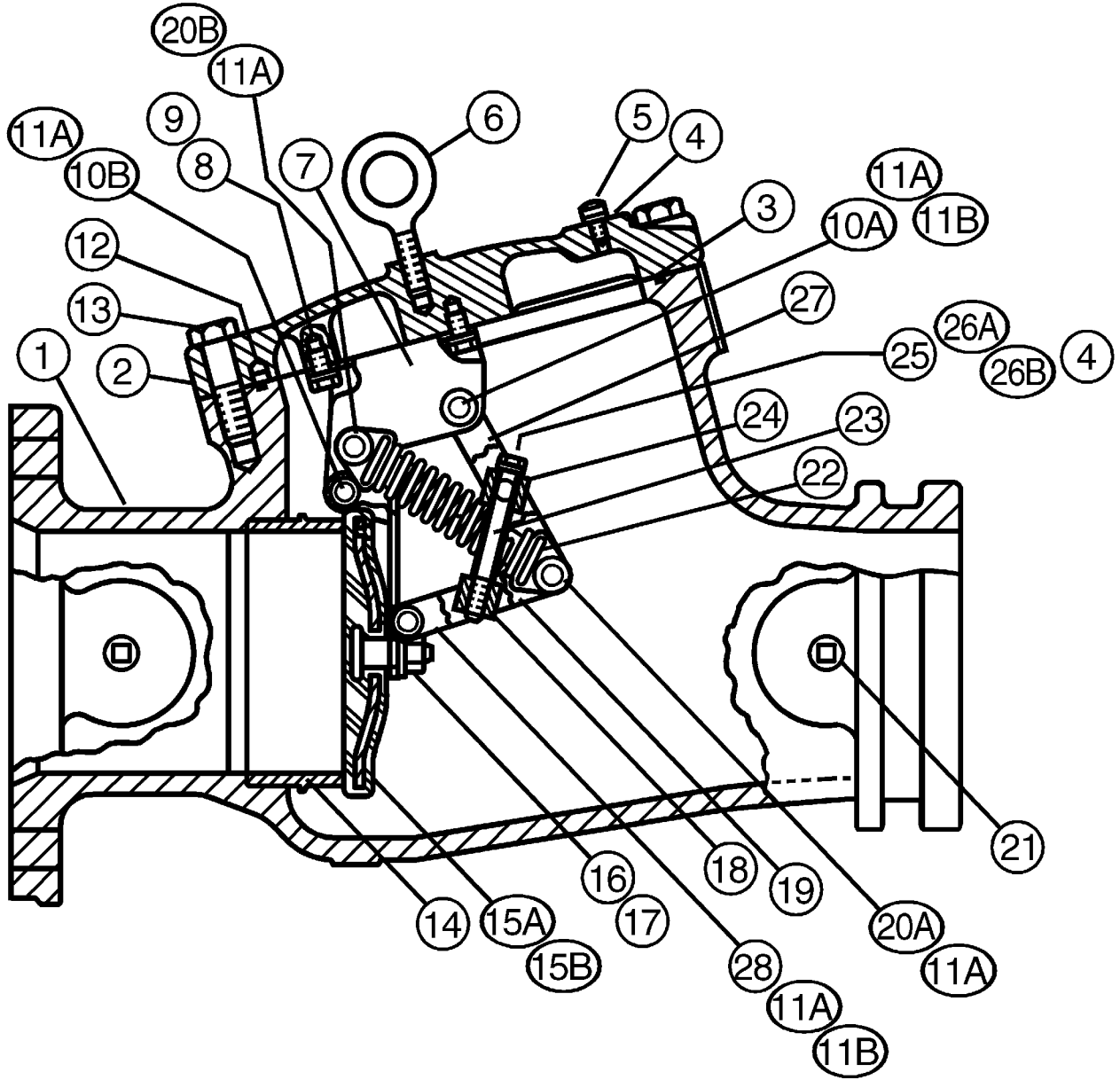
Model EDC IV

# Model EDCIV



Spring Loaded Detector Check Valves  
Sizes 3", 4", 6", 8" and 10"

## Parts Less Bypass Meter



# Model EDCIV

**Mueller** SYSTEMS

## Spring Loaded Detector Check Valves Sizes 3", 4", 6", 8" and 10"

Model EDCIV Parts

Ref. No.	Description	3" Model	4" Model	6" Model	8" Model	10" Model
1	Body - Flange x Flange with Epoxy Body - Flange x Flange with Red Paint	N/A N/A	N/A N/A	N/A N/A	N/A N/A	N/A N/A
2	Cover - with Epoxy Cover - with Red Paint	N/A N/A	N/A N/A	N/A N/A	N/A N/A	N/A N/A
3	Cover O-ring	AS7612	AS7612	AS7613	AS7614	AS7615
4	Nylon Washer	59073 (2)	59073 (2)	59073 (2)	59073 (2)	59073 (2)
5	Vent Screw	59003	59003	59003	59003	59003
6	Eye Bolt	AS7733	AS7733	AS7731	AS7731	AS7731
7	Cover Bracket	B7868	B7868	C5736	C5726	C5749
8	Cover Bracket Cap Screw	AS7621 (3)	AS7621 (3)	AS7622 (3)	AS7623 (3)	AS7623 (3)
9	Cover Bracket Spring Lock Washer	AS7651 (3)	AS7651 (3)	AS7653 (3)	AS7654 (3)	AS7654 (3)
10A	Pin	A127241	A127241	A127041	A127011 (2)	A127201
10B	Pin	-	-	-	-	A127202
11A	Retaining Ring	AS7681 (8)	AS7681 (8)	AS7682 (10)	AS7683 (10)	AS7684 (6)
11B	Retaining Ring	-	-	-	-	AS7683 (4)
12	Groove Pin	AS7641 (2)	AS7641 (2)	AS7642 (2)	AS7643 (2)	AS7643 (2)
13	Cap Screw	AS4822 (5)	AS4822 (5)	AS48226 (8)	AS48227 (8)	AS48229 (10)
14	Seat	B7939	B7939	B7942	B7944	B8018
15A	Clapper Only	B78661	B78661	B78861	CS7281	CS7471
15B	Clapper Assembly (includes Clapper, Links, Spring Assembly, Cover Bracket, Swing Arm, Tube, Bar and Screws, Nuts, Pins)	E20843	E20843	E20153	E20093	E20213
16	Clapper Hex. Nut	AS7631	AS7631	AS7632	AS7633	AS7634
17	Clapper Spring Lock Washer	AS7651	AS7651	AS7655	AS7656	AS7657
18	Bar Nut	-	-	A12738	A12742	A12723
19	Lower Link	B79221 (2)	B79221 (2)	B78831 (2)	B78791 (2)	B78991 (2)
20A	Pin	A12724	A12724	A127042	A127012	A127203
20B	Pin	A12722	A12722	-	-	-
21	Bypass Plug	103131005 (4)	103131005 (4)	103131005 (4)	103131005 (4)	103131008 (4)
22	Spring Assembly	B7871 (2)	B7871 (2)	B7891 (2)	B7880 (2)	B7902 (2)
23	Tube	-	-	A12736	A12741	A12777
24	Bar	-	-	A12737	A12740	A12722
25	Bar Screw	-	-	AS7624	AS7625	AS7627
26A	Bar Screw Lock Washer	-	-	AS7855	AS7653	AS7654
26B	Bar Screw Flat Washer	-	-	AS7792	N/A	AS7794
27	Upper Link	B79223 (2)	B79223 (2)	B78832 (2)	B78792 (2)	B78992 (2)
28	Swing Arm	C5712	C5712	C5737	C5725	C5749