

# Model Hydrant Meter

Size 3"

**Mueller** SYSTEMS

## Features

**APPLICATIONS:** Recommended for measuring high-volume water usage from fire hydrants or other fire protection systems. Convenient hose connections and light-weight construction make this portable turbine meter useful for accurately measuring water used to fill street sweepers, water tankers or other equipment.

**CONFORMANCE TO STANDARDS:** Hersey Model HM Water Meters comply with ANSI/AWWA Standard C701 class II. Each meter is tested to ensure compliance.

**CONSTRUCTION:** Hersey Model HM Water Meters consist of three basic parts: D-I-M-E (Drop-In-Measuring-Element), bottom case and register. The D-I-M-E assembly contains all of the working parts inside of the meter and is easily removed from the bottom case when servicing is desired. The bottom case is constructed from cast aluminum to be lightweight and has built in carry handles for portability. The register is enclosed in a lockable bronze register box. The rotor assembly is thermoplastic which is dimensionally stable and will not corrode. The inlet connection has a 2-1/2" female national hose thread swivel adapter and the outlet connection is 2-1/2" male national hose threads.

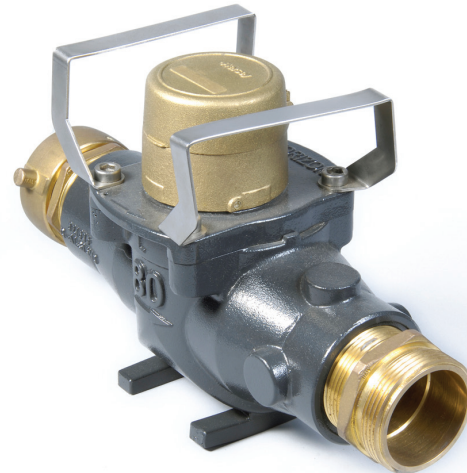
**REGISTER:** The permanently sealed register incorporated a bayonet style locking mechanism with Hersey's unique integral tamper pin. The totalizing register has a straight-reading odometer type display, a 360° test circle with center sweep hand and a low flow (leak) indicator.

**OPERATION:** Water flows straight through the turbine section where it turns a rotor at a rate in direct proportion to the amount of water flowing through the meter. The straight-through design allows high volumes to flow with a minimum of head loss. Retro Thrust™ rotor design extends the life of the meter by dividing wear between two points: during low flow the tungsten carbide thrustbearing floats against a sapphire bearing surface; during high flow the stainless steel shaft gently contacts a second sapphire bearing. During medium flow, the rotor floats between the thrust bearings without contact.

**MAINTENANCE:** The Hersey Model HM Meters are designed and manufactured to provide long service life with virtually no maintenance required. D-I-M-Es are available for field replacement and offer new meter accuracy and warranty benefits without field testing. Existing D-I-M-Es can be returned to the factory for refurbishment with new registers and measuring elements for installation later.

**CONNECTIONS:** Available with National Standard for fire hose coupling thread, female and male couplings.

**CARRYING HANDLE:** Facilitates ease of transportation.



3" Fire Hydrant Meter

Hydrant Meter

## Materials and Specifications

MODEL DESIGNATION	Hydrant Meter
SIZE	3"
MAXIMUM WORKING PRESSURE	175 PSIG
TEMPERATURE RANGE	33°F to 130°F water temperature
OPERATING RANGE	8 - 500 GPM
METER TOP CASE	Bronze
METER BOTTOM CASE	Epoxy-coated cast aluminum
MEASURING CHAMBER	Thermoplastic
REGISTER BOX AND LID	Bronze
END DETAIL (fire hose couplings)	Inlet: 2-1/2" - 7-1/2 NPSH (National Standard for fire hose coupling thread) Female Coupling. Outlet: 2-1/2" - 7-1/2 NPSH, Male Nipple
SHAFTS AND BOLTS	Stainless steel

## Meter Registration

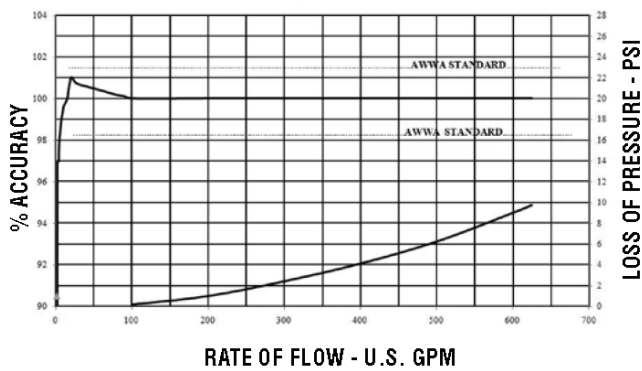
Meter Size	Initial Dial*	Capacity	Initial Dial*	Capacity
3"	100 Gal.	100 Million	10 Cubic Ft.	10 Million

## Flow Characteristics

Meter Size	Typical Low Flow (95% Min.)	Typical Operating Range (100% ± 1.5%)	Maximum Continuous Operation	Maximum Intermittent Flow
3"	5 GPM	8 to 500 GPM	500 GPM	625 GPM

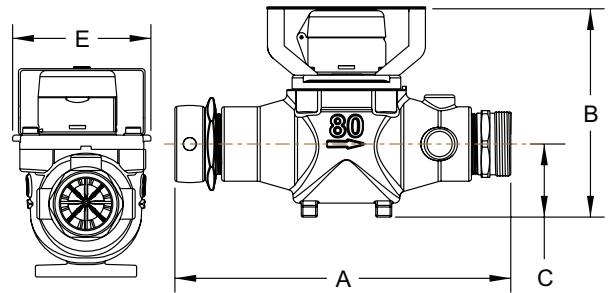
## Performance

### 3" Hydrant Meter



\*Performance curves are typical only and not a guarantee of performance.

## Dimensions and Weights



Dimension	
A	16"
B	9-7/8"
C	3-3/8"
E	6-1/2"
Net weight	14.6

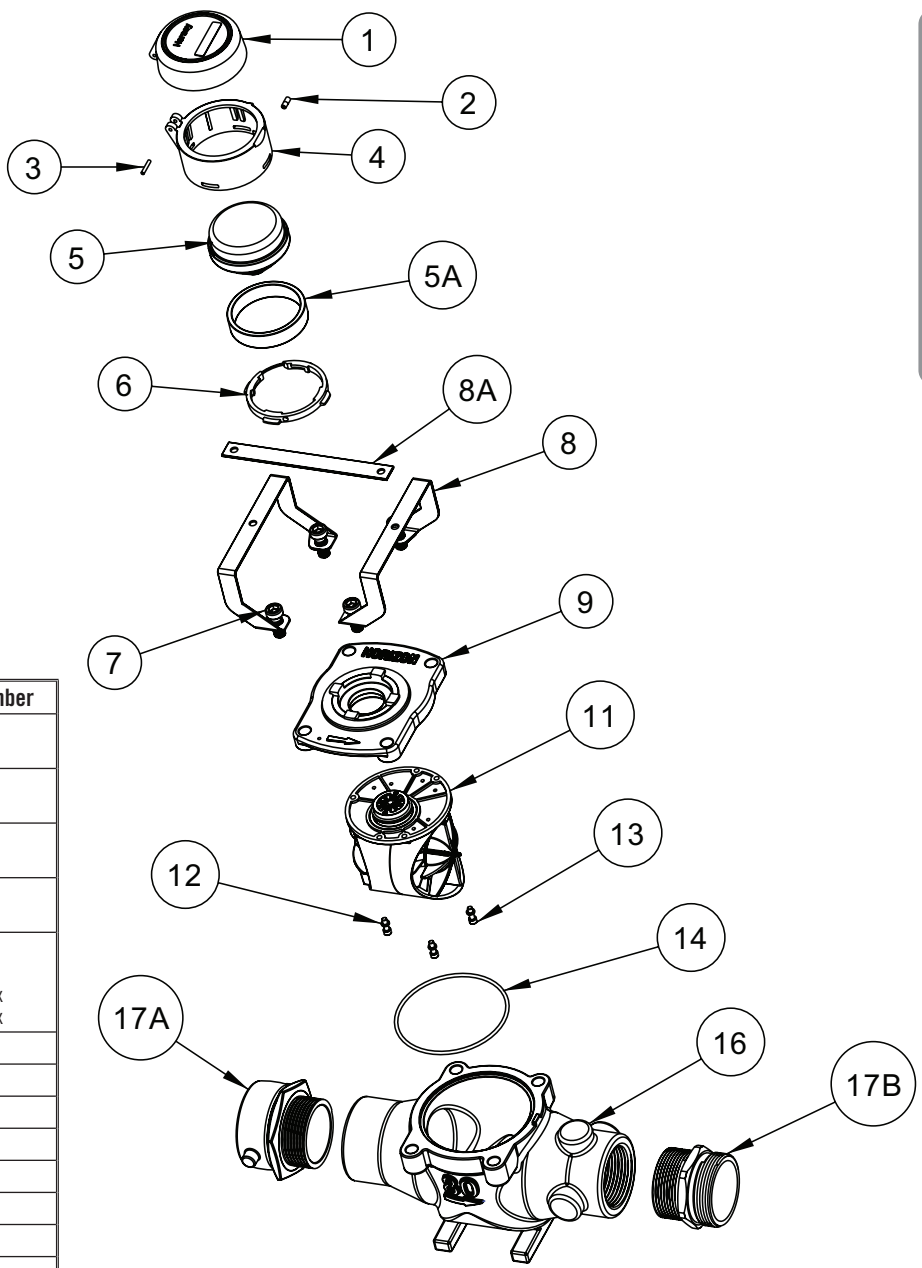
NOTE: Meter may be ordered with less couplings, but a restriction orifice is needed. Weight is approximate and in pounds.

# Model Hydrant Meter

Size 3"



Hydrant Meter



Ref. No.	Description	Part Number
1	Register Box Lid (Plastic) (Brass)	n/a 50387
2	Locking Pin (Blue Color Plastic) (Brass Color Plastic)	n/a A126581
3	Lid Pin (Plastic) (Brass Color)	n/a AS41123
4	Register Housing Base (Plastic) (Bronze)	n/a 50386
5	Visual Register (Gallon) (Cubic Feet) Translator Register (Gallon) (Cubic Feet)	D36211 D36212 D36211xxx D36212xxx
5a	Spacer (not shown)	50382
6	Register Housing Insert	C5770
7	Case Bolt	54002 (4)
8	Handle	54023
8a	Locking Bar (optional)	54024
9	Top Case	54016
10	Built-in Strainer	N/A
11	Complete Measuring Element	C6598A
12	Measuring Element Washer	98155 (3)
13	Measuring Element Screw	98475 (3)
14	Case Gasket / O-Ring	54602
15	Test Plug	N/A
16	Bottom Case	54025
17A	2-1/2" MPT x 2-1/2" Female hose swivel adapter	54014
17B	2-1/2" MPT x 2-1/2" Male hose swivel adapter	54015
31	Drop In Measuring (CF) Element (GAL)	5461H 5462H

\*Call Mueller Systems for appropriate Translator Register and AMR/AMI device part number.

This page intentionally left blank.