

MUELLER

420 SERIES BRONZE

420 Bronze PD Meter - Sizes $\frac{5}{8}$ " x $\frac{1}{2}$ " and $\frac{5}{8}$ " x $\frac{3}{4}$ "

FEATURES

Applications: The Mueller® 420 bronze is a nutating disc style, positive displacement meter designed for residential and small commercial applications where water volumes are low and low flow sensitivity is important.

Conformance to Standards: All Mueller 420 bronze meters meet or exceed the latest revision of the AWWA C-700 Standard for positive displacement meters. Every 420 bronze no lead meter is compliant with the latest initiatives of NSF, ANSI and EPA standards.

Construction: Mueller 420 water meters consist of three basic parts: maincase; measuring chamber; and permanently sealed register. The maincase is made of bronze for long life. Direction of flow arrows and model are cast into each maincase for ease of identification. The bottom cover is epoxy-coated cast iron with a molded plastic liner separating it from the waterway. Optional bronze and polymer bottom covers are available. The measuring chambers are designed for reduced wear during operation. The measuring chamber, integral strainer, nutating disc and thrust roller are thermoplastic, which is dimensionally stable and will not corrode. The register housing and lid are available in your choice of plastic or bronze for standard visual read registers. The meter is designed so that the register can be replaced easily without removing the meter from the service line.

Register: The permanently sealed visual read register has a unique triple "L" seal and heat treated, glass lens to eliminate dirt, moisture infiltration and fogging. An integral tamper-proof locking feature is provided to resist tampering with the register. The totalizing register has a straight-reading odometer type display, a 360° test circle with center sweep hand and a low flow (leak) detector. Standard gearing is used, making registers interchangeable by size. The 420 bronze meter is available with all AMR and AMI options for increased reading efficiency.

Operation: Water flows through the meter's strainer where debris is screened out. The incoming water fills a known volume of the measuring chamber on one or the other side of a movable disc that separates the chamber into two sections. As water enters, it moves the disc (nutates), forcing a known volume of water out of the meter from the opposite side of the disc. The process repeats as the sections refill and empty in turn. The nutating action of the disc is coupled magnetically to the register to indicate the volume of water that passes through the meter.

Maintenance: The Mueller 420 positive displacement meter is designed and manufactured to provide long service life with virtually no maintenance required. Repair components available include complete chamber assemblies and bottom plate gaskets. All components can be accessed without removing the meter body from the service line for simplified maintenance.

Connections: Supplied with external straight pipe threads (NPSM) per ANSI B1.20.1



$\frac{5}{8}$ " x $\frac{1}{2}$ " 420 BRONZE PD METER

MATERIALS AND SPECIFICATIONS

Model	420 Bronze Meter
Sizes	$\frac{5}{8}$ " x $\frac{1}{2}$ ", $\frac{5}{8}$ " x $\frac{3}{4}$ "
Standards	AWWA C-700, Most current NSF-61, ANSI, & EPA Initiatives
Service	Measurement of flow in forward direction only
Installation	Horizontal or Vertical
Operating Flow Range	See charts on the following pages
Accuracy	See charts on the following pages
Maximum Working Pressure	150 psi
Temperature Range	33° F to 100° F water temperature
Measuring Element	Nutating Disc PD Chamber
Register Type	Straight reading, permanently sealed, magnetic drive with low flow indicator and remote reading capability
Meter Connections	External straight pipe threads (NPSM)
Materials	Meter case - Bronze Bolts - Stainless Steel Measuring Element Chamber and Disc - Thermoplastic Disc Pin - SST Strainer - Thermoplastic
Options	AMR/AMI Reading Systems

420 SERIES BRONZE

420 Bronze PD Meter - Sizes $\frac{5}{8}$ " x $\frac{1}{2}$ " and $\frac{5}{8}$ " x $\frac{3}{4}$ "

METER REGISTRATION

METER SIZE	INITIAL DIAL*	CAPACITY	INITIAL DIAL*	CAPACITY
$\frac{5}{8}$ "	10 Gallons	10 Million	1 Cubic Feet	1 Million

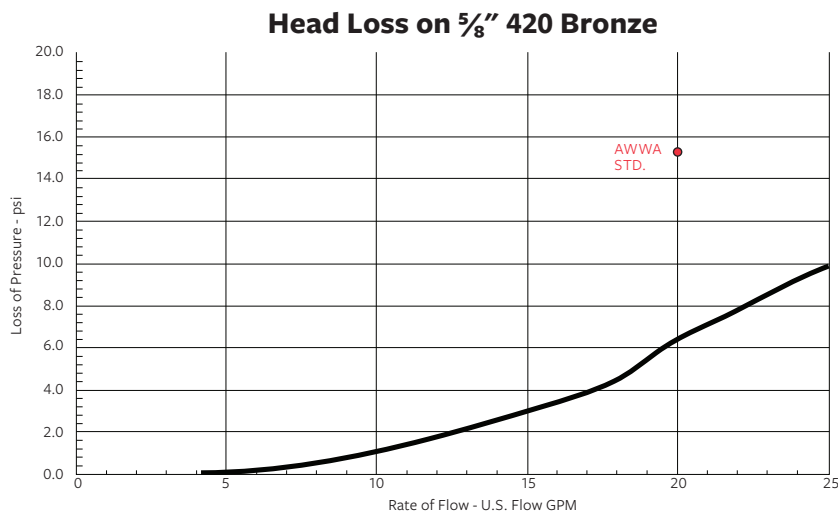
*Registration equal to one full revolution of the sweep hand.

FLOW CHARACTERISTICS

METER SIZE	TYPICAL LOW FLOW (95% MINIMUM)	TYPICAL OPERATING RANGE (100% ± 1.5%)	MAXIMUM CONTINUOUS OPERATION
$\frac{5}{8}$ "	$\frac{1}{8}$ GPM	$\frac{1}{2}$ to 20 GPM	15 GPM

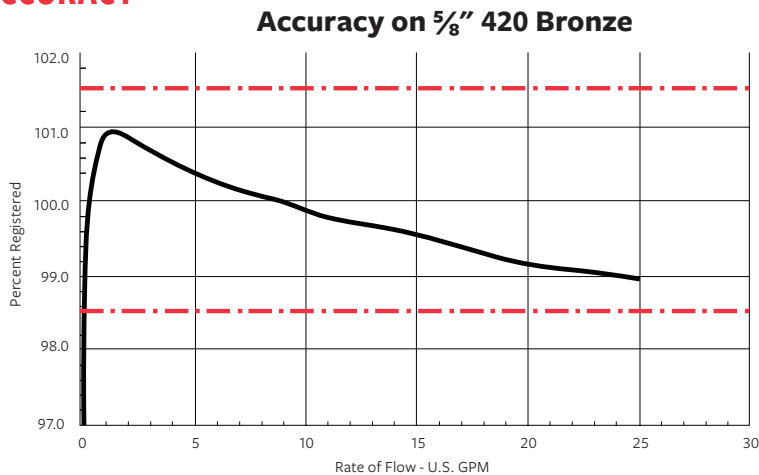
PERFORMANCE

HEAD LOSS



NOTE: Performance curves are typical only and NOT a guarantee of performance.

ACCURACY



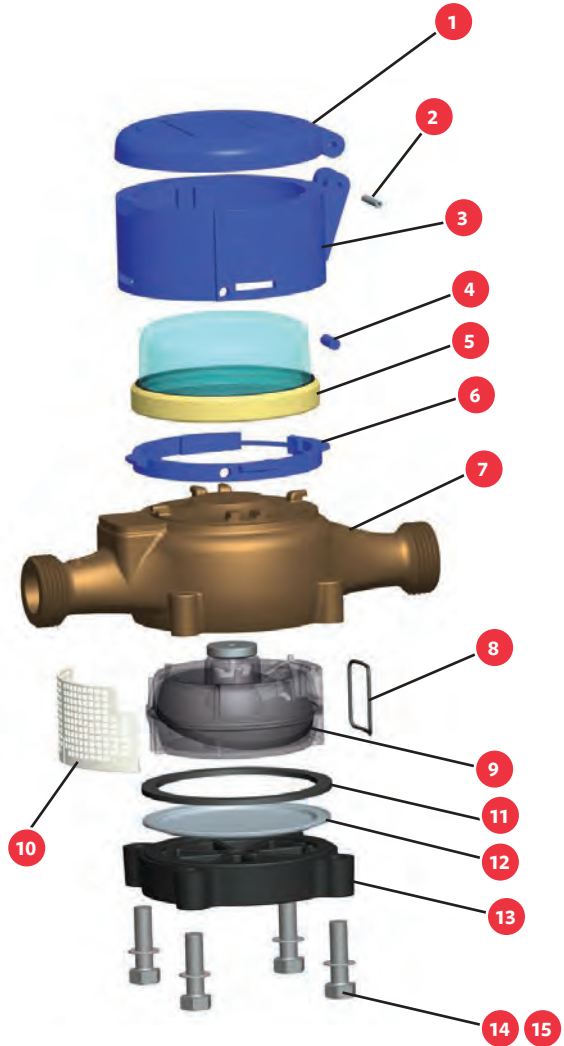
NOTE: Performance curves are typical only and NOT a guarantee of performance.

420 SERIES BRONZE

420 Bronze PD Meter - Sizes $\frac{5}{8}$ " x $\frac{1}{2}$ " and $\frac{5}{8}$ " x $\frac{3}{4}$ "

MODEL 420 BRONZE METER ASSEMBLY COMPONENTS

ITEM	PART #	DESCRIPTION	QTY
1	C5768	Plastic Register Cover	1
	C5774	Bronze Register Cover	
2	C5769	Plastic Register Housing Base	1
	C5772	Bronze Register Housing Base	
3	AS41122	Plastic Lid Spirol Pin	1
	AS41123	Bronze Lid Spirol Pin	
4	AS12658	Blue Color Register Locking Pin	1
	AS126581	Bronze Color Register Locking Pin	
5	D36981	Model 420 Visual Register SG	1
	D36982	Model 420 Visual Register CF	
	D36983	Model 420 Visual Register CM	
6	C5770	Register Housing Insert	1
7	D3680SI	$\frac{5}{8}$ " x $\frac{3}{4}$ " Model 420 Main Case	1
	D3681-1SI	$\frac{5}{8}$ " x $\frac{1}{2}$ " Model 420 Main Case	
8	A13120	Model 420 Chamber O-Ring	1
9	D3635PO	Model 420 Chamber Assembly	1
10	C6681	Model 420 Bronze Strainer Retainer	1
11	B8664	Model 420 Bronze Gasket	1
12	B8665	Model 420 Liner (Iron / Brz Only)	1
	B8663	Model 420 Iron Bottom Plate	
	B8662	Model 420 Bronze Bottom Plate	
	C6682	Model 420 Polymer Bottom Plate	
14	90026	$\frac{5}{16}$ - 18 x $\frac{7}{8}$ " Hex Bolt SS (Iron / Brz Btm)	4
	90010	$\frac{5}{16}$ - 18 x 1 $\frac{1}{8}$ " Hex Bolt SS (Plastic Btm)	
15	90018	$\frac{5}{16}$ Flat Washer SS (Polymer Btm)	4

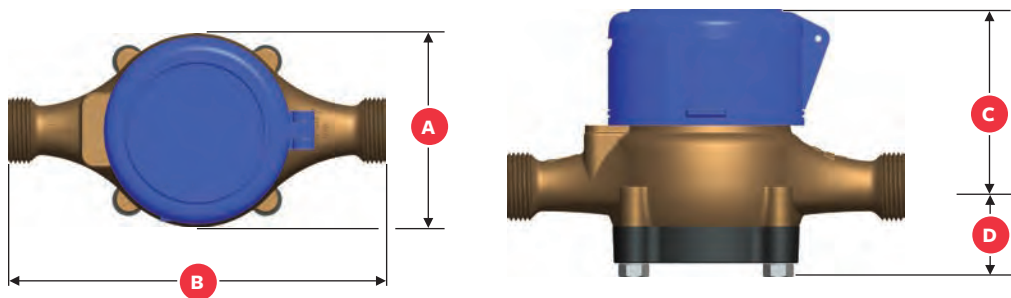


DIMENSIONS, WEIGHTS AND PARTS

METER SIZE		$\frac{5}{8}$ "		
MODEL	420 BRONZE STANDARD REGISTER	420 BRONZE SSR REGISTER	420 BRONZE ME-8 REGISTER	
DIMENSION				
A	3.8125"	3.8125"	3.8125"	
B	7.5"	7.5"	7.5"	
C	3.3125	3"	3.5"	
D	1.375"	1.375"	1.375"	
Weight	3.7	3.7	3.7	

Weights are in pounds are approximate.
Inlet and outlet $\frac{1}{2}$ " or $\frac{3}{4}$ "

420 BRONZE METER



For more information about Mueller or to view our full line of water products, please visit muellersystems.com or call Mueller customer service at 1.800.423.1323.

Mueller refers to one or more of Mueller Water Products, Inc. a Delaware corporation ("MWP"), and its subsidiaries. MWP and each of its subsidiaries are legally separate and independent entities when providing products and services. MWP does not provide products or services to third parties. MWP and each of its subsidiaries are liable only for their own acts and omissions and not those of each other. MWP brands include Mueller®, Echologics®, Hydro Gate®, Hydro-Guard®, HYMAX®, Jones®, Krausz®, Mi.Net®, Milliken®, Pratt®, Pratt Industrial®, Singer®, and U.S. Pipe Valve & Hydrant. Please see muellerwp.com/brands and krauszusa.com to learn more.

© 2020 Mueller Systems, LLC. All Rights Reserved. The trademarks, logos and service marks displayed in this document are the property of Mueller Water Products, Inc., its affiliates or other third parties. Products above marked with a section symbol (§) are subject to patents or patent applications. For details, visit www.mwppat.com. These products are intended for use in potable water applications. Please contact your Mueller Sales or Customer Service Representative concerning any other application(s).

