

MUELLER

MUELLER ENCODER EIGHT (ME-8)

FEATURES

Applications: The Mueller Encoder Eight register (ME-8) is available for use on current Mueller positive displacement meters in $\frac{5}{8}$ " through 2" sizes. The Mueller Encoder Eight register provides granular data for use in the latest AMR and AMI applications while the eight wheel visual display provides visual verification that aids in the detection of leaks and backflow.

The Mueller Encoder Eight register provides eight digits of visual resolution and up to 8 digits of electronic resolution for outstanding granularity when used in conjunction with current Mueller AMR and AMI systems. Granularity of data permits customers to capture maximum revenue and be proactive in leak detection and resource conservation. Mechanical meter technology and electromechanical register design provide a proven and time tested solution for water utility needs.

The display provides $\frac{5}{16}$ " high, color contrasted odometer wheels for easy visual verification of radio frequency transmissions or field testing. The unique, never duplicated ten digit serial number on the Mueller Encoder Eight register housing identifies it as the basis for all systems communication. The register face plate and housing provide visual information specific to the registration units, model, size, date of manufacture, and billing units, to provide verifiable and retrievable data in the event it is required.

Conformance to Standards: Mueller Encoder Eight register complies with AWWA requirements for odometer wheel height as well as the American Standard Code for Information Interchange or ASCII.

Construction: Mueller utilizes a UV stable, molded enclosure and lid made of thermoplastic to permanently house the ME-8 register components. The heat treated, tempered glass lens resists years of punishment. A variety of cable connection options as well as touch pads are available.



MUELLER ENCODER EIGHT (ME-8)

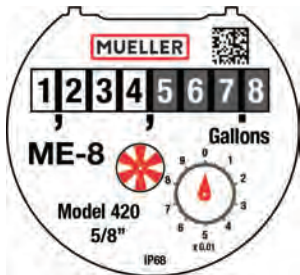
The Mueller Encoder Eight register is compatible with all bayonet style locking mechanisms offered on Mueller positive displacement meters. The register is tamper protected by the unique Mueller locking pin. The register can be replaced without removing the meter from the service line when required due to vandalism or damage.

Operation: The Mueller Encoder Eight register detects the rotation of the drive magnet incorporated into the meter measuring element of the positive displacement meter. Light tubes inside the register capture the true position of all eight odometer wheels eliminating the possibility of odometer wheel errors.

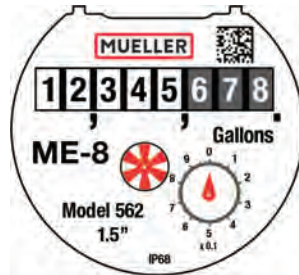
When interrogated by a Mueller AMR / AMI device, the Mueller Encoder Eight register communicates the unique ten digit serial number and up to an eight digit electronic reading in ASCII format where it can be recorded and maintained within the reporting structure of the AMR / AMI system. In the event that field testing is required, the high resolution test wheel provides excellent test resolution for all $\frac{5}{8}$ " through 2" positive displacement meters.

Maintenance: The Mueller Encoder Eight register is designed and manufactured to provide a 20 year service life with virtually no maintenance required. Register lids are available as replacement components in the event of vandalism or the need for meter retrofits.

METER FACE PLATE - GALLONS

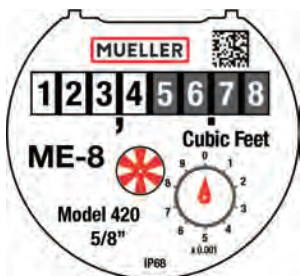


MODEL 420, 435, 452

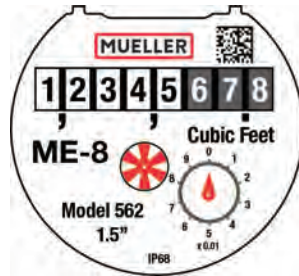


MODEL 562, 572

METER FACE PLATE - CUBIC FEET

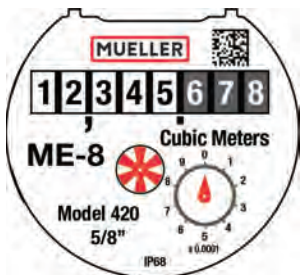


MODEL 420, 435, 452

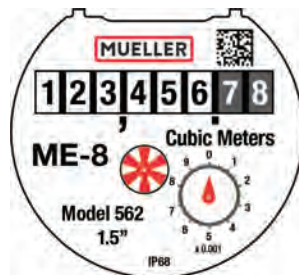


MODEL 562, 572

METER FACE PLATE - CUBIC METERS



MODEL 420, 435, 452



MODEL 562, 572

All Mueller ME-8 registers are shipped displaying zeros for all odometer wheel values. Examples here are provided for illustration only.

Mueller always recommends ME-8 registers are programmed for 8 wheel electronic resolution for the best leak and back flow detection possible.

For more information about Mueller or to view our full line of water products, please visit muellersystems.com or call Mueller customer service at 1.800.423.1323

Mueller refers to one or more of Mueller Water Products, Inc. a Delaware corporation ("MWP"), and its subsidiaries. MWP and each of its subsidiaries are legally separate and independent entities when providing products and services. MWP does not provide products or services to third parties. MWP and each of its subsidiaries are liable only for their own acts and omissions and not those of each other. MWP brands include Mueller®, Echologics®, Hydro Gate®, Hydro-Guard®, HYMAX®, i2O®, Jones®, Krausz®, Mi.Net®, Milliken®, Pratt®, Singer®, and U.S. Pipe Valve & Hydrant. Please see muellerwp.com/brands and muellersystems.com to learn more.

© 2022 Mueller Systems, LLC. All Rights Reserved. The trademarks, logos and service marks displayed in this document are the property of Mueller Water Products, Inc., its affiliates or other third parties. Products above marked with a section symbol (§) are subject to patents or patent applications. For details, visit www.mwppat.com. These products are intended for use in potable water applications. Please contact your Mueller Sales or Customer Service Representative concerning any other application(s).

F 14186 5/22

MATERIALS AND SPECIFICATIONS

Model	Mueller Encoder Eight Register (ME-8)
Register Type	Absolute Encoder Register
Size	All current 5/8" through 2" Positive Displacement Meters Meter models 420, 435, 452 562, 572
Standards	Manufactured and tested to meet or exceed all applicable parts of ANSI/AWWA C707 Standard and the American Standard Code for Information Interchange (ASCII)
Temperature Operating Range	32°F (0°C) to 158°F (70°C)
Storage Temperature Range	-4°F (-20°C) to 158°F (70°C)
Connection Options	5' Nicor Connector, 5' Itron In-Line Connector, and 5' flying lead wire
Materials	Register housing and lid - thermoplastic; Register lens - glass; Display - 8 digit visual resolution and up to 8 digit electronic resolution with Mueller AMR/AMI systems
AMR/AMI Compatibility	Mueller Mi.Net AMI system, and other AMR/AMI systems that can utilize the Mueller standard encoder protocol output. Touch pad compatible.

MUELLER