



SOLID STATE METER (SSM)

Sizes $\frac{5}{8}$ " x $\frac{3}{4}$ " and $\frac{3}{4}$ " Short; $\frac{3}{4}$ " Long; and 1"

Applications: The Mueller solid state meter (SSM) is available in $\frac{5}{8}$ " x $\frac{3}{4}$ " through 1" sizes. The SSM meter provides 9 digits of granular data for visual reads and 9 digits in encoded electronic format for use in Mueller Mi.Net AMR/AMI applications. The meter can be used in any residential or commercial application where a high degree of accuracy at low flow rates is important.

Construction: The SSM meter utilizes a low lead copper alloy body with a polymer measuring tube and patented stainless steel reflectors. A heat treated glass lens and polymer lid surround provide protection for the liquid crystal display. Lithium batteries provide power for the processor for 17 years of life. All internal electronics are potted to prevent water intrusion in the toughest environments.

Operation: The SSM meter utilizes ultrasonic measurement technology to provide outstanding accuracy across a broad flow range with extremely low pressure loss. The static meter design means there are no moving parts inside the meter so it will not degrade in accuracy over the life of the meter due to mechanical wear, providing exceptional revenue for years to come.

With starting flow rates as low as 0.017 GPM and ultra-low flow accuracy of 95% at 0.05 GPM on the $\frac{5}{8}$ " x $\frac{1}{2}$ ", $\frac{5}{8}$ " x $\frac{3}{4}$ " - 1", $\frac{3}{4}$ " short, $\frac{3}{4}$ " standard, and 1" sizes, the SSM is capable of wringing every drop of revenue from your system and detecting the smallest leaks and backflow conditions. The stainless steel reflectors and measuring tube design channel water over the reflectors to help keep them free of debris and to help reduce pressure loss of the water as it passes through the tube, contributing to the high degree of meter accuracy.

The display provides large numerals and icons that permit verification of the 9-digit meter volume as well as direction of flow, error alarm status, and battery life. A unique, never duplicated 9-digit serial number on the SSM meter faceplate and lid identifies it as the basis for all systems communication. The register face plate and housing provide visual information specific to the registration units, model, size, date of manufacture, and billing units, to provide verifiable and retrievable data in the event it is required.

When interrogated by a Mueller AMR/AMI device, the SSM meter communicates the unique 9-digit serial number and 9-digit electronic reading in ACSII format where it can be recorded and maintained within the reporting structure of the AMR/AMI system.

Conformance to standards: Mueller SSM meter complies with AWWA C715 requirements for accuracy and odometer wheel height as well as the American Standard Code for Information Interchange or ASCII.

SOLID STATE METER
 $\frac{5}{8}$ " x $\frac{3}{4}$ " - 1"



MATERIALS AND SPECIFICATIONS

Model	Solid State Meter (SSM)
Register Type	Solid State Encoder Register
Sizes	$\frac{5}{8}$ " through 1" Ultrasonic Meters
Standards	Manufactured and tested to meet or exceed all applicable accuracy and pressure loss requirements of the AWWA C715 standard and the American Standard Code for Information Interchange (ASCII)
Temperature Operating Range	-13°F to 131°F
Storage Temperature Range	-13°F to 158°F
Water Temperature Range	33°F to 122°F
Connection Options	18" Nicor Connector, with factory potted connections
Materials	Processor/register housing and lid - thermoplastic; Low lead brass flow tube; LCD, SST reflectors
AMR/AMI Compatibility	Mi.Net AMR/AMI system, and other AMR/AMI systems that can utilize the standard 9-digit encoder protocol output.

SOLID STATE METER (SSM)

Sizes 5/8" x 3/4" and 3/4" Short; 3/4" Long; and 1"

GENERAL TECHNICAL DATA

Medium Temperature Range	33 ... 122°F
Ambient Operating Temperature	-13 ... 131°F
Ambient Storage Temperature	-13 ... +158°F (95°F max. for 4 weeks)
Maximum Pressure	300 psi
Power Supply	Two 3.6 VDC lithium batteries
Battery Lifetime	Up to 20 years
Interfaces	Industry standard Encoder protocol, ASCII output for compatibility with most AMR / AMI systems
Data Storage	Alarms and consumption values (42 days of hourly data storage)
Protection Class	IP68

TECHNICAL DATA DISPLAY

Display Indication	LCD, 9-digit, Gallon Visual display to 0.1 Gallons and Cubic Foot Display to 0.01 Cubic Feet
Units	Flow and volume (GPM, Gal, Ft ³ , and M ³)
Values Displayed	Volume - flow - reverse flow - display test - error and alarm status
Values Transmitted	9-digit electronic resolution only

APPROVAL

NSF	Complies with NSF / ANSI Standard 61, Annex F/G and 372
AWWA	Meets or exceeds applicable sections of the AWWA / ANSI C715 Standard

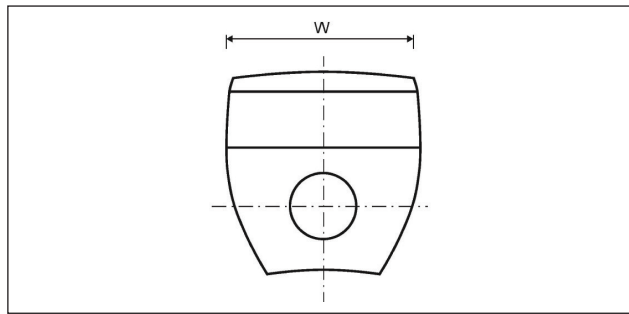
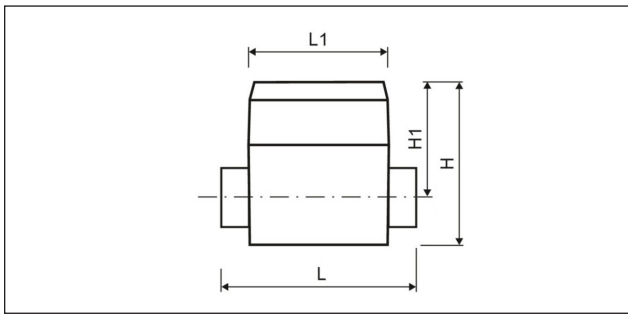
STANDARD PROGRAMMING

METER SIZE	UNITS	# OF DISPLAY DIGITS	# OF OUTPUT DIGITS	DECIMAL	# OF UNDERLINES
5/8" – 1"	Gallons (SG)	9	9	0.1	0
5/8" – 1"	FT ³ (CF)	9	9	0.01	0
5/8" – 1"	M ³ (CM)	9	9	0.001	0

SOLID STATE METER (SSM)

Sizes $\frac{5}{8}$ " x $\frac{3}{4}$ " and $\frac{3}{4}$ " Short; $\frac{3}{4}$ " Long; and 1"

DIMENSIONS



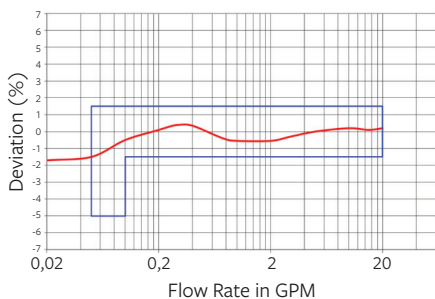
SIZE			$\frac{5}{8}$ " x $\frac{3}{4}$ "	$\frac{3}{4}$ " S	$\frac{3}{4}$ " L	1"
Lay Length	L	Inch	7.5"	7.5"	9.0"	10.75"
Register Length	L1	Inch	3.5"	3.5"	3.5"	3.5"
Register Width	W	Inch	3.7"	3.7"	3.7"	3.7"
Overall Height	H	Inch	4.0"	4.0"	4.0"	4.2"
Height from Center of Pipe to Top	H1	Inch	2.7"	2.7"	2.7"	2.8"
Nominal Thread Size			1"-11.5 NPSM	1"-11.5 NPSM	1"-11.5 NPSM	1.25"-11.5 NPSM
Net Weight		Lb.	2.8	2.8	3.1	3.5

TECHNICAL DATA

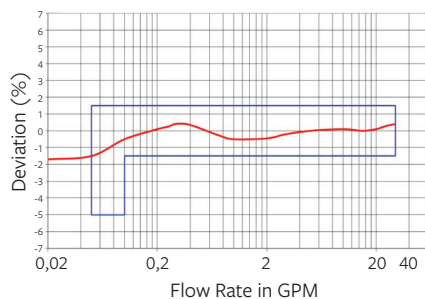
SIZE		$\frac{5}{8}$ " x $\frac{3}{4}$ "	$\frac{3}{4}$ " S	$\frac{3}{4}$ " L	1"
Operating Flow Range	GPM	0.08 - 22	0.1 - 32	0.1 - 32	0.1 - 55
Low Flow Range	GPM	0.025 - 0.08	0.04 - 0.1	0.04 - 0.1	0.055 - 0.1
Operating Range accuracy	%	±1.5	±1.5	±1.5	±1.5
Low Flow Range accuracy	%	±5	±5	±5	±5
Pressure Loss		2.0 psi at 15 GPM	2.0 psi at 15 GPM	2.0 psi at 15 GPM	1.5 psi at 25 GPM

TYPICAL FLOW CHARTS

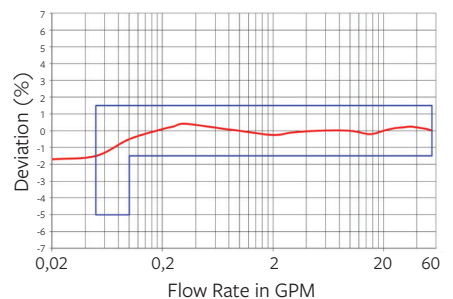
Typical Flow Chart $\frac{5}{8}$ " Mueller SSM



Typical Flow Chart $\frac{3}{4}$ " Mueller SSM



Typical Flow Chart 1" Mueller SSM



For more information about us, or to view our full line of products, please visit www.muellersystems.com or call Customer Service at +1 800.423.1323 ext. 4, 1.

Mueller refers to one or more of Mueller Water Products, Inc. a Delaware corporation ("MWP"), and its subsidiaries. MWP and each of its subsidiaries are legally separate and independent entities when providing products and services. MWP does not provide products or services to third parties. MWP and each of its subsidiaries are liable only for their own acts and omissions and not those of each other. MWP brands include Mueller®, Echologics®, Hydro Gate®, Hydro-Guard®, HYMAX®, Jones®, Krausz®, Mi.Net®, Milliken®, Pratt®, Pratt Industrial®, Singer®, and U.S. Pipe Valve & Hydrant. Please see muellerwp.com/brands to learn more.

© 2026 Mueller Systems, LLC. All Rights Reserved. The trademarks, logos and service marks displayed in this document are the property of Mueller Water Products, Inc., its affiliates or other third parties. Products above marked with a section symbol (§) are subject to patents or patent applications. For details, visit www.mwppat.com. These products are intended for use in potable water applications. Please contact your Mueller Sales or Customer Service Representative concerning any other application(s).

